



GLAMPING CUBE 42 M2 | L SHAPE



PRODUCT DESCRIPTION

Glamping is where stunning nature meets modern luxury. Experiential travel is an authentic way to connect with nature.

Maybe you call it luxury camping? or glamorous camping? Either way, Viking Industrier has dedicated this cubes project to inspiring and guiding those who are seeking a different kind of trip! Each cube model in our range is hand-made and meets an established set of standards in order to be listed.

Glamping Cube 42 m² | L shape project consists of 4 cube frames: 3 x 3 m (2 pcs) and 3 x 4 m (2 pcs).

Using tempered glass walls of size 1000 x 2200 mm to the L-shape project gives a larger feel and also allows natural light to get inside.

Specifications (Not Insulated Cube)

Glamping Cube frames are made from laminated glue spruce beams. It consists of a bottom frame (100 x 140 mm), columns (140 x 140 mm), top frame (140 x 200 mm) and withstands 183 kg/m² roof load. The floor is made of 146 x 28 mm floors board.

Standard full panel walls (horizontal spruce cladding). Panel size 1000 x 2200 mm; Wall frame 45 x 45 mm; Panel covered with inside 96 x 12 mm and outside 145 x 18 mm spruce cladding boards.

Wooden tempered glass walls. Panel size is 1000 x 2200 mm; Wall frame 75 x 45 mm with full tempered glass window.

Full panel wall with an opening window (horizontal spruce cladding). Panel size 1000 x 2200 mm; Wall frame 45 x 45 mm; Wall frame 45 x 45 mm; Panel covered with inside 96 x 12 mm and outside 145 x 18 mm spruce cladding boards. Size of window (glass package) 880 x 510 mm.

Wooden door. Spruce wood door of size 1850 x 690 mm (without windows) with metal handles and locks.

Sliding doors system Alutech. 3 rails, single glass (thickness 4 mm) system of size 3000 x 2200 mm. Color: metallic/white. This is a single-chamber aluminum system with a lock.

Specifications (Insulated Cube)

Insulated Glamping Cube 42 m² | L shape project consists of 4 cube frames: 3 x 3 m (2 pcs) and 3 x 4 m (2 pcs) and insulated floor and roof panels (rockwool 50 mm).

Standard insulated full panel walls (horizontal spruce cladding). Panel size 1000 x 2200 mm; Wall frame 45 x 45 mm; Insulation 50 mm stonewool; Panel covered with inside 96 x 12 mm and outside 145 x 18 mm spruce cladding boards.

Wooden glass wall with glass package. Panel size is 1000 x 2200 mm; Wall frame 75 x 45 mm with glass package of one chamber (2 glasses) window.

Insulated full panel wall with an opening window (horizontal spruce cladding). Panel size 1000 x 2200 mm; Wall frame 45 x 45 mm; Insulation (rockwool 50 mm). Panel covered with inside 96 x 12 mm and outside 145 x 18 mm spruce cladding boards. Size of window (glass package) 880 x 510 mm.

Wooden door. Spruce wood door of size 1850 x 690 mm (without windows) with metal handles and locks.

Sliding doors system Reynaers. 3 rails, system of size 3000 x 2200 mm. Color: metallic/white. Design depth is 50 mm for wings and 120 mm for frames double ground ways and 184 mm for triple ground ways frames.

Perfect layout for family holidays

This one-floor cube has a 42 m² plot area and is perfect for 5-6 people. The interior is subdivided into 4 defined spaces, with standard wooden doors that separate them. The spaces are defined by two bedrooms 12 m² and 9 m², a bathroom 6 m², a kitchen, and a living room space 15 m².

The product standard set is without furniture, rainwater pipes, and terrace!



SPECIFICATION

People	5-6 persons
Timber	Spruce
Room	4
Inside area	42.0 m ²
Total height	2853 mm
Floor thickness	28 mm
Exterior Cladding	18 mm
Interior Cladding	12 mm
External dimension	6572 x 11858 mm
Door size	3000 x 2200 mm
Window size	1000 x 2200 mm

STANDARD SET

4 units garden cube frames from spruce 3 x 3 m (2 pcs) and 3 x 4 m (2 pcs);

Not insulated / Insulated roof panels with self-adhesive bitumen membrane;

Not insulated / Insulated wooden floor;

Not insulated / Insulated standard full panel walls;

Wooden tempered glass wall panels / Wooden glass wall with glass package;

Not insulated / Insulated full panel walls with opening windows;

Inside wooden door with a lock;

Sliding doors system Alutech / Reynaers (3000 x 2200 mm);

4 rooms inside: 2 bedrooms, shower room and kitchen and living room area.

DELIVERY

Assembling time 56 hours

Size of pallets (LxWxH) 2 pallets of size 4.40 x 1.20 x 2.55 m and 2 pallets of 3.40 x 1.20 x 2.55 m

This Glamping Cube 42 m² | L shape is delivered to the customer fully complete, with detailed assembly instructions and drawings, and packed on a pallet (KIT).

ACCESSORIES



Rainwater Pipes*



Ceiling Lamp

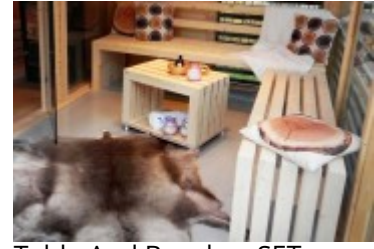


Table And Benches SET

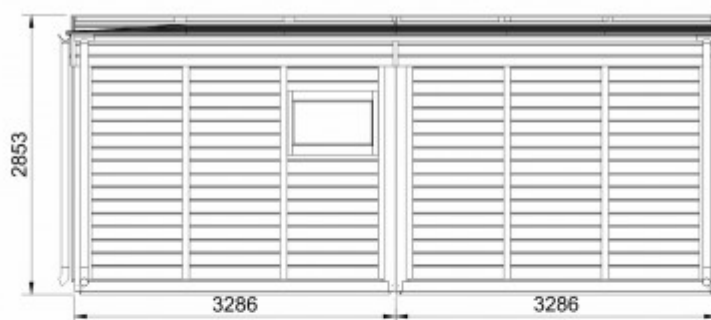
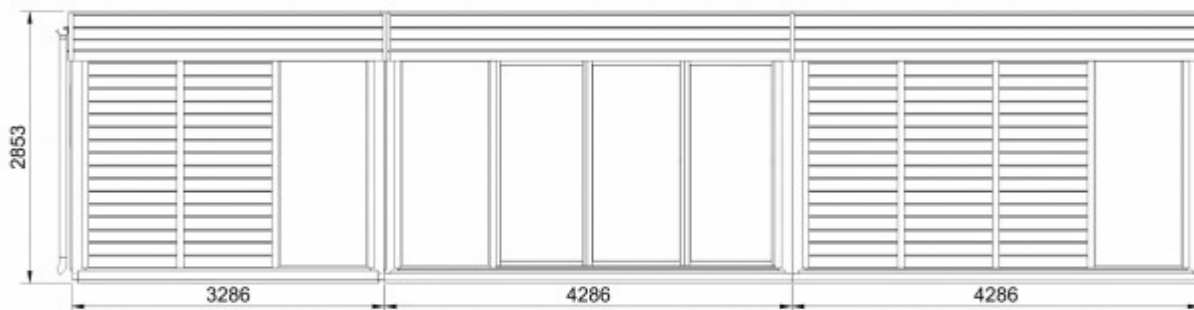


White Cushion Set for
Benches and Table

DRAWINGS

GLAMPING CUBE 42 m² | L SHAPE DRAWINGS

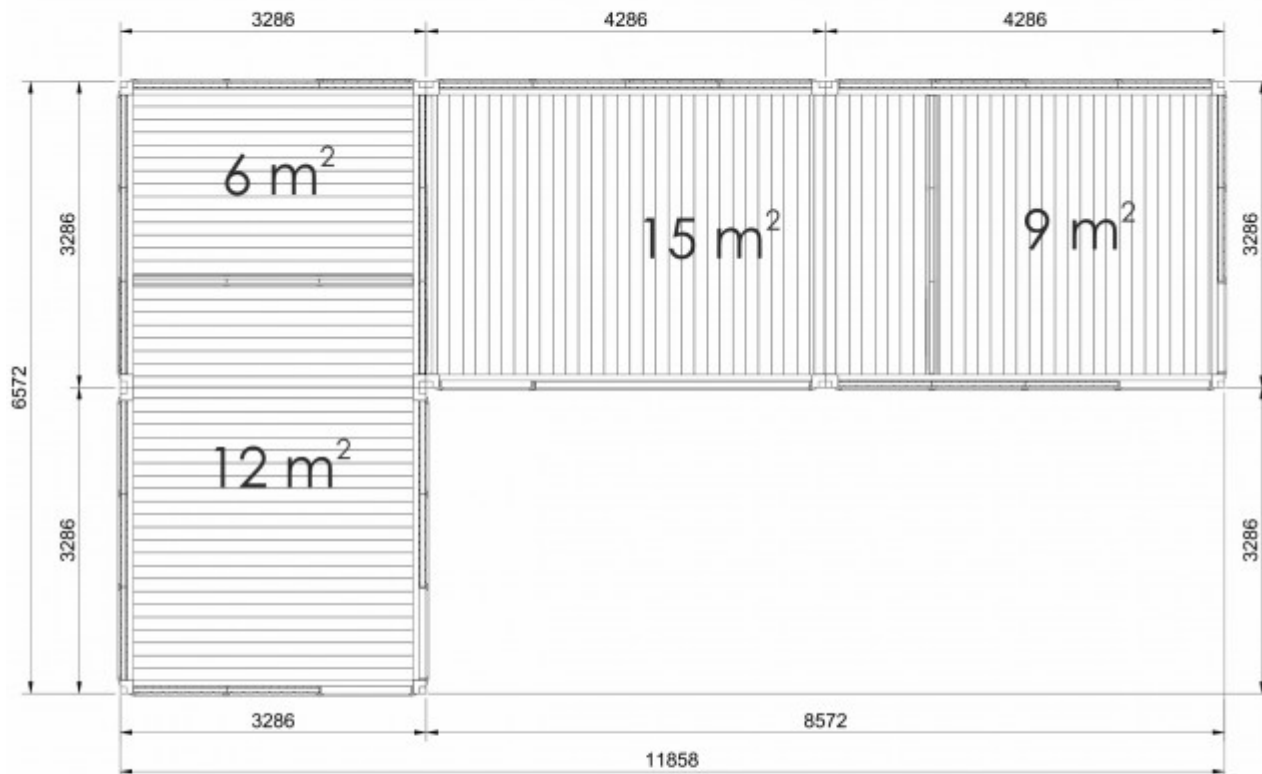
FACADES



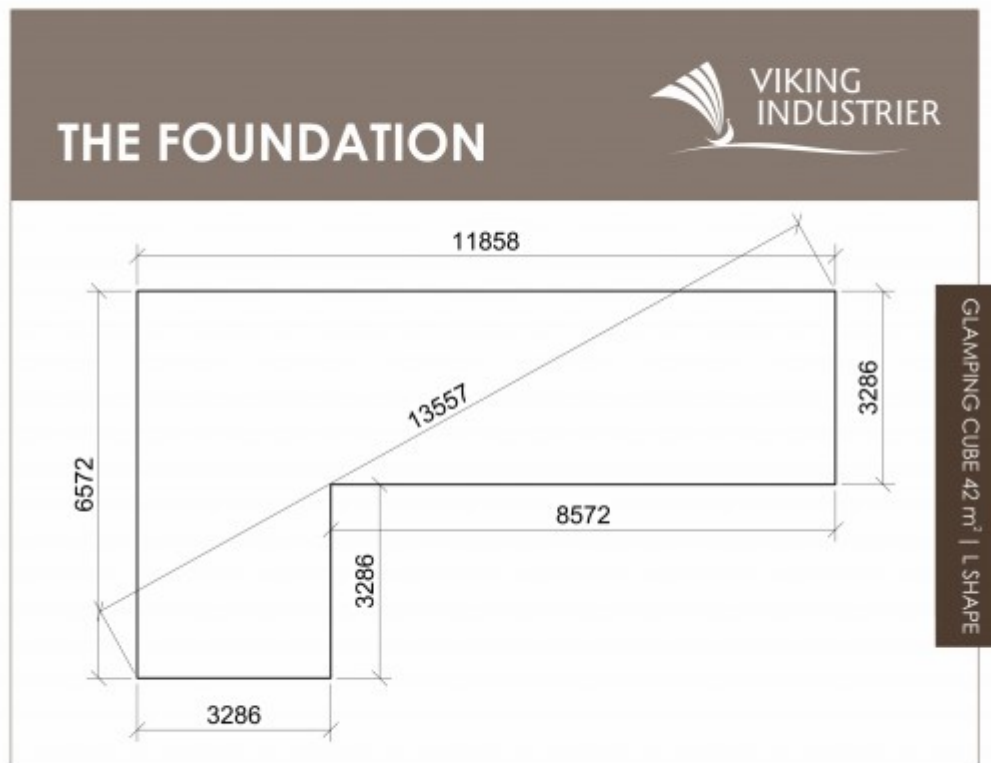
DRAWINGS

GLAMPING CUBE 42 M² | L SHAPE DRAWINGS

PLAN



FOUNDATION



It is very important to have a proper base for your Glamping Cube. Therefore, we recommend following our sketches and consulting a qualified local builder or engineer. Making sure that the base for your product fits the location is of utmost importance.

Due to an improper base, the structure may crack. If the product is unevenly seated, the geometric shape of the building may change, which can result in the door/windows twisting, and/or gaps. In the worst-case scenario, the product may even collapse.

- Before building the base, make sure you take into account the landscape and the ground conditions on which the product will stand.
- The base under the product must be prepared specifically for the product.
- The base must be homogeneous, tight and level.
- Make sure that the properties of the base do not change over time. We recommend making the base out of concrete and water-proofing it before installation.

If you do not follow recommendations for building the base, the product will lose its warranty!

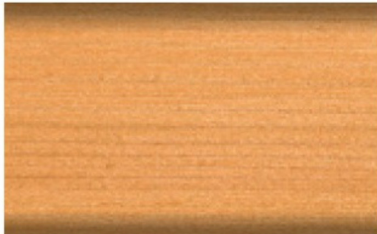
PAINTING

COLOR CARD

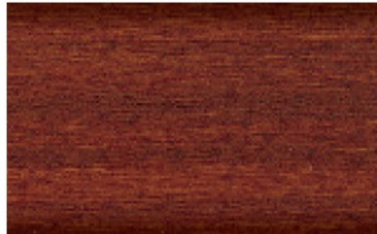
EXTERIOR WOOD STAIN COLORS



Water-based, quick drying premium total protection for wood outside.
Thin layer varnish – 3 in 1: impregnation, primer, and varnish!



PINE / LARCH RC260



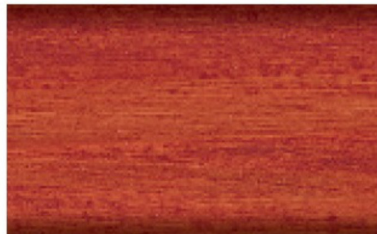
TEAK RC545



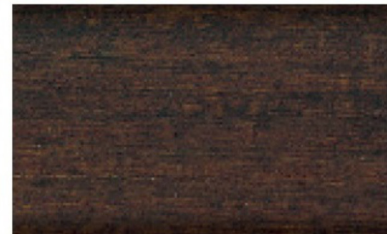
CHESTNUT RC555



FIR GREEN RC960



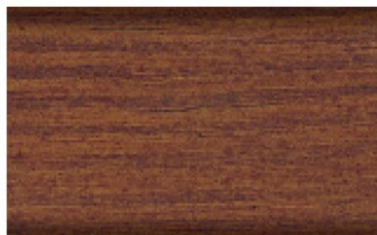
MAHAGONY RC565



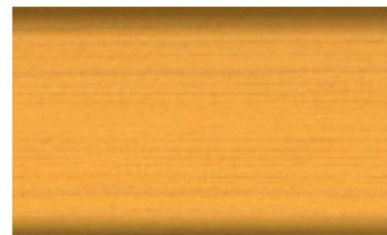
PALISANDER RC720



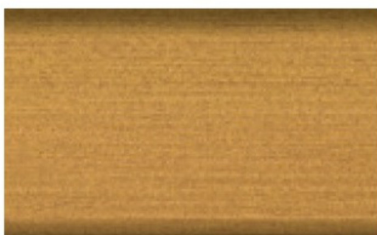
SILVER GREY RC970



NUT WOOD RC660



PINE RC270



RUSTIC OAK RC360



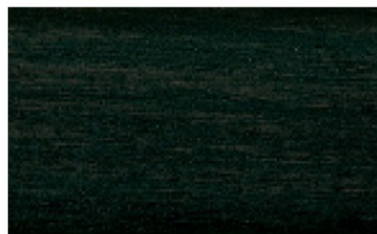
LIGHT OAK RC365



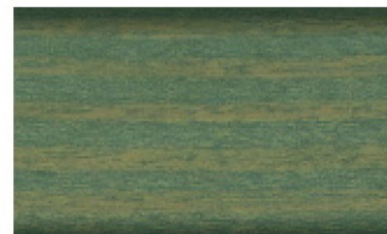
HEMLOCK RC120



WHITE RC990



EBONY RC790



SALT GREEN RC965

PLEASE NOTE: The colors shown in the catalogue and website may not 100% match the color you will receive.
The color of the wood material affects the final color.

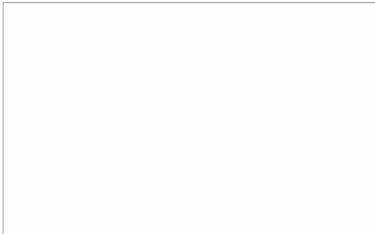
PAINTING

COLOR CARD

EXTERIOR WOOD PAINT COLORS



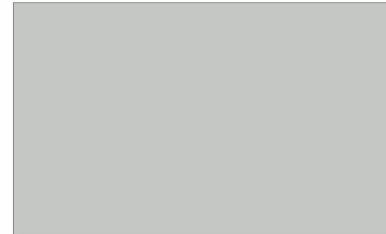
Weather protection, water-based paints. High-performance and environmentally friendly.



WHITE / RAL 9016



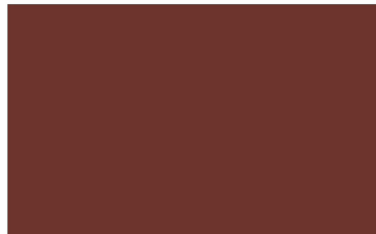
ANTRACITE GREY / RAL 7016



LIGHT GREY / RAL 7035



DUSTY GREY / RAL 7037



OXIDE RED / RAL 3009



JET BLACK / RAL 9005



MOSS GREEN / RAL 6005



AZURE BLUE / RAL 5009



GREY BROWN / RAL 8019



BROWN RED / RAL 3011

PLEASE NOTE: The colors shown in the catalogue and website may not 100% match the color you will receive. The color of the wood material affects the final color.

PAINTING

AUTOMATIC MACHINE SPRAY TECHNOLOGY

Benefits

One of the main and most obvious benefits of using a paint machine is the speed and flexibility at which we can suggest our painting service for all of our products. A spray paint machine can get the work done faster and more consistently than manually painting. While the machine works faster, it improves quality too – sprayers produce an even coat of paint, leaving a high-quality finish. With our painting service from now, we can suggest to our client maximum flexibility! Not assembled products such as Grill cabins, Pavilions, Camping pods, and other products of any size you can order painted too!

PROFESSIONAL SPRAY

The high-quality preservative finish is professionally spray applied in the factory to three sides of the wood. The product is treated in your choice of color. You can choose two colors for one product: one for almost all product details and another for finishing details.

STAIN | PAINT

Which type of paint should I Use?

Properly painting and impregnating is one of the most important things to consider when thinking about how to extend your product's lifetime. Paint and natural wood finish instantly spruce up the aesthetics of your product. The decision you will need to make is if you want to use a water-based wood stain or paint. Both will offer you UV protection. The wood stains will allow the texture of the wood to show through and many are now available in a vast range of colors, however, paints will give you an intensive color, but will cover the grain and texture of the wood.

USAGE AND MAINTENANCE

Things to note when using the product:

- Products that are used for staying overnight should be equipped with a smoke alarm and an extinguisher;
- The product owner is responsible for the security and should work out a rescue plan for the camping site;
- Remember that using heating appliances or temporary camping stoves isn't just a fire risk, but a risk of carbon monoxide poisoning as well.

MAINTENANCE. You should not forget that wood is a natural material, it changes more depending on weather conditions. Large and small cracks, color tone differences and changes, as well as a changing structure of wood are not errors, but a result of wood growing and a feature of wood as a natural material. Natural wood (not impregnated) becomes greyish after having been left untouched for a while and can be turned blue and become mouldy. You should immediately process them with wood impregnations to protect the wooden details of our produced products.

- Like any our product, our produced furniture's needs to be looked after and processed with a wood impregnation agent or painted if you want it to last for years. Regular cleaning of your furniture is necessary to prevent mould. General warm soapy water is enough if done regularly;
- If necessary, outside doors must be adjusted by the customer;
- If you do not use your Product often we highly recommend to use the installation of our vent to stop condensation;
- If you find a sap pocket open during the life of your Product - you can allow it to dry naturally and then cut the sap off with a blade.



Misko 25, LT-85302 Venta, Lithuania
info@vikingindustrier.com

www.vikingindustrier.com